



## 1-Bedroom

### TYPE A1

39 sq m | 420 sq ft

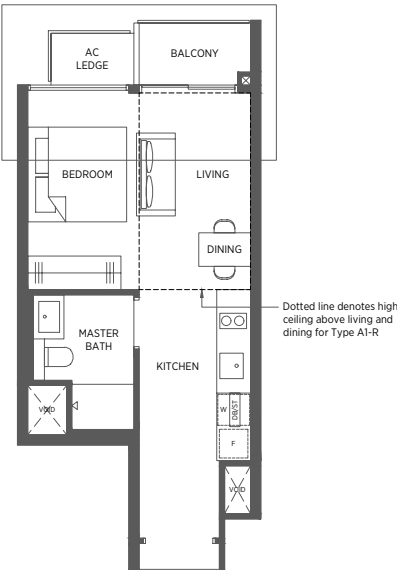
#02-06 to #17-06  
#02-15 to #17-15  
#02-20 to #17-20\*  
#02-53 to #17-53\*  
#02-66 to #17-66  
#02-75 to #17-75

### TYPE A1-R

48 sq m | 517 sq ft

#18-06  
#18-15  
#18-20\*  
#18-53\*  
#18-66  
#18-75

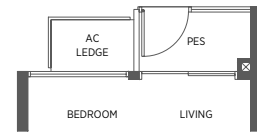
Incl. of 9 sq m | 97 sq ft of void area (high ceiling) above living & dining



### TYPE A1-P

39 sq m | 420 sq ft

#01-06  
#01-15  
#01-20\*  
#01-53\*  
#01-66  
#01-75



### TYPE A2

42 sq m | 452 sq ft

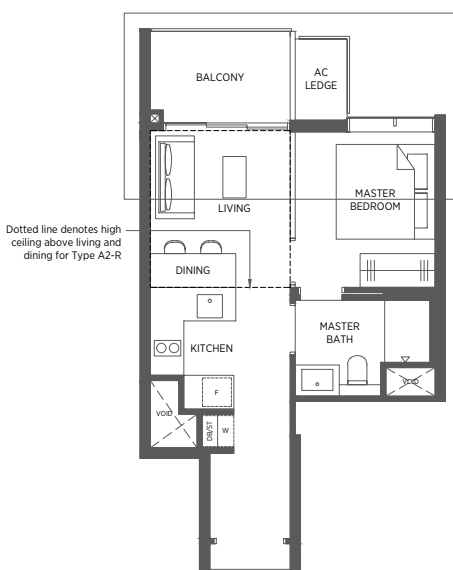
#02-05 to #17-05  
#02-14 to #17-14  
#02-21 to #17-21\*  
#02-54 to #17-54\*  
#02-65 to #17-65  
#02-74 to #17-74

### TYPE A2-R

51 sq m | 549 sq ft

#18-05  
#18-14  
#18-21\*  
#18-54\*  
#18-65  
#18-74

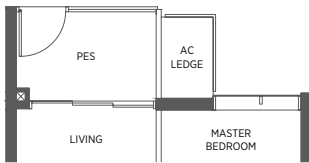
Incl. of 9 sq m | 97 sq ft of void area (high ceiling) above living & dining



### TYPE A2-P

42 sq m | 452 sq ft

#01-05  
#01-14  
#01-21\*  
#01-54\*  
#01-65  
#01-74



## 1-Bedroom + Study

### TYPE AD1

48 sq m | 517 sq ft

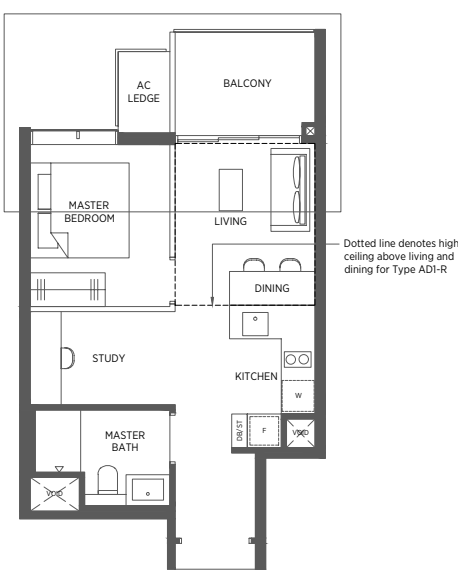
#02-52 to #17-52\*  
#02-67 to #17-67  
#02-76 to #17-76

### TYPE AD1-R

57 sq m | 614 sq ft

#18-52\*  
#18-67  
#18-76

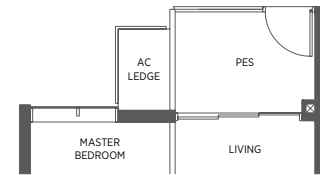
Incl. of 9 sq m | 97 sq ft of void area (high ceiling) above living & dining



### TYPE AD1-P

48 sq m | 517 sq ft

#01-52\*  
#01-67  
#01-76



### TYPE AD2

49 sq m | 527 sq ft

#02-07 to #17-07  
#02-16 to #17-16  
#02-19 to #17-19\*

### TYPE AD2-R

58 sq m | 624 sq ft

#18-07  
#18-16  
#18-19\*

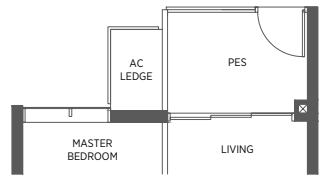
Incl. of 9 sq m | 97 sq ft of void area (high ceiling) above living & dining



### TYPE AD2-P

49 sq m | 527 sq ft

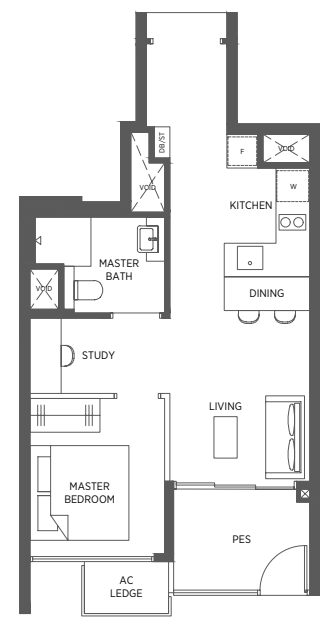
#01-07  
#01-16



### TYPE AD3-P

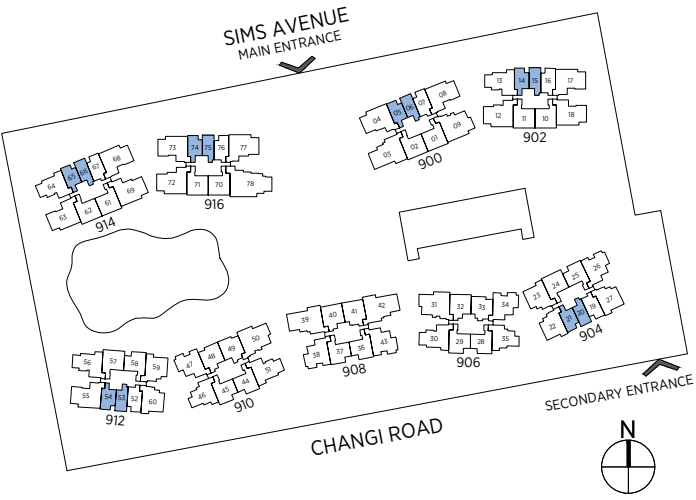
49 sq m | 527 sq ft

#01-01  
#01-10  
#01-25\*  
#01-28  
#01-36  
#01-44  
#01-58\*  
#01-61



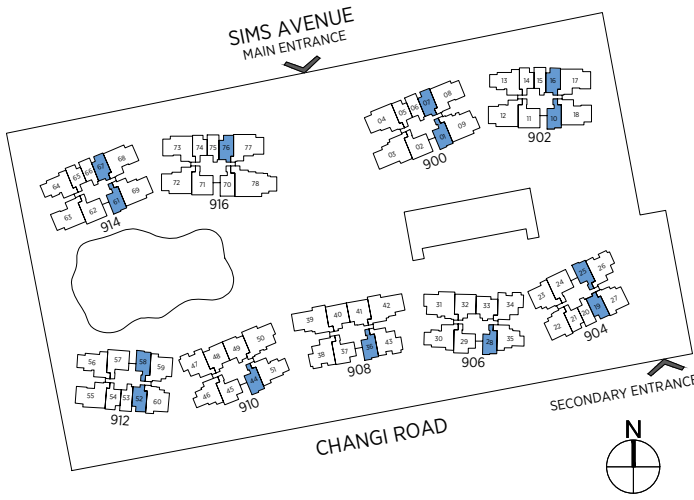
\* Denotes mirror image

Area includes a/c ledge, balcony and void area (high ceiling). The plans are subject to change as may be required or approved by the relevant authorities. Areas are approximate measurements only and are subject to final survey. Plans are not drawn to scale and do not form part of the contract.



\* Denotes mirror image

Area includes a/c ledge, balcony and void area (high ceiling). The plans are subject to change as may be required or approved by the relevant authorities. Areas are approximate measurements only and are subject to final survey. Plans are not drawn to scale and do not form part of the contract.

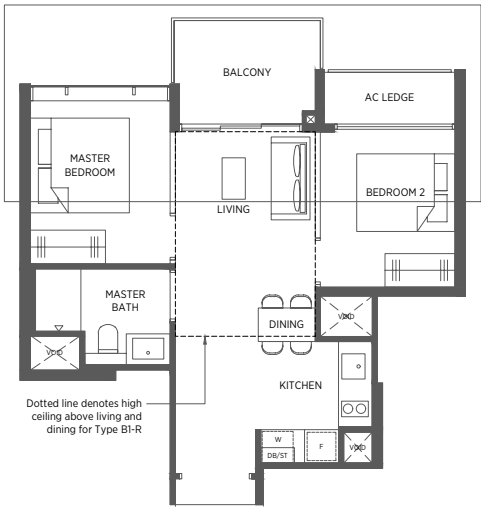


# 2-Bedroom

## TYPE B1      TYPE B1-R

54 sq m | 581 sq ft      65 sq m | 700 sq ft

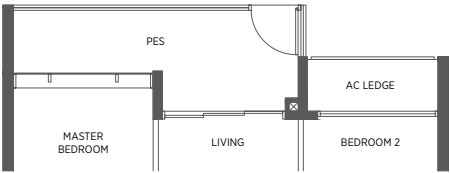
#02-33 to #17-33      #18-33  
Incl. of 11 sq m | 118 sq ft of void area (high ceiling) above living & dining



## TYPE B1-P

58 sq m | 624 sq ft

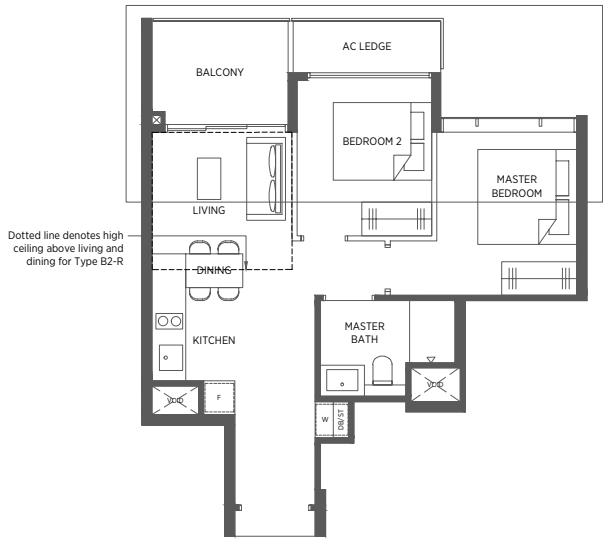
#01-33



## TYPE B2      TYPE B2-R

56 sq m | 603 sq ft      64 sq m | 689 sq ft

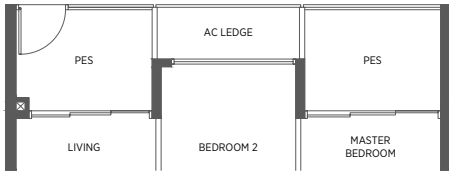
#02-32 to #17-32      #18-32  
Incl. of 8 sq m | 86 sq ft of void area (high ceiling) above living & dining



## TYPE B2-P

61 sq m | 657 sq ft

#01-32

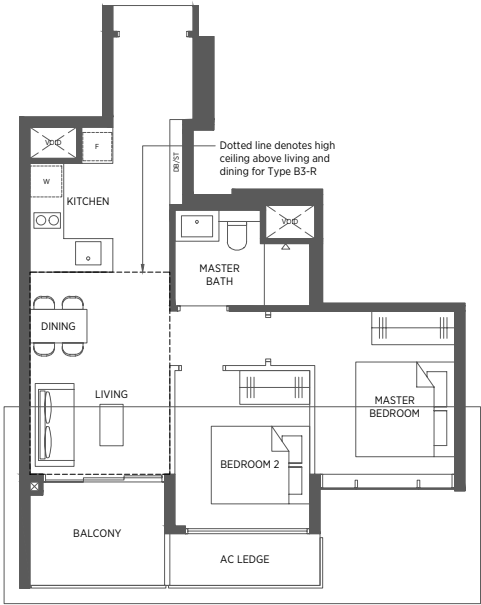


# 2-Bedroom

## TYPE B3      TYPE B3-R

59 sq m | 635 sq ft      70 sq m | 753 sq ft

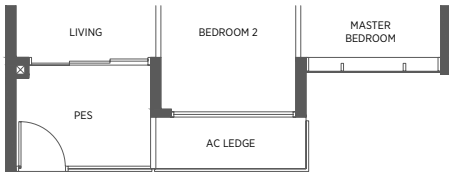
#02-28 to #17-28\*  
#02-29 to #17-29  
#02-36 to #17-36\*  
#02-37 to #17-37  
#02-44 to #17-44\*  
#02-45 to #17-45  
#18-28\*  
#18-29  
#18-36\*  
#18-37  
#18-44\*  
#18-45  
Incl. of 11 sq m | 118 sq ft of void area (high ceiling) above living & dining



## TYPE B3-P

59 sq m | 635 sq ft

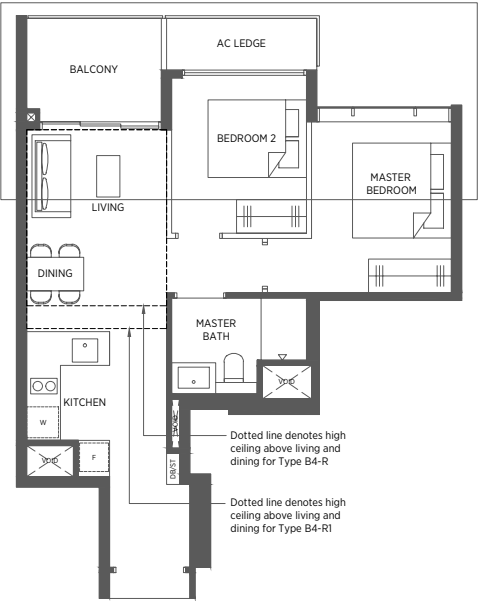
#01-29  
#01-37  
#01-45



## TYPE B4      TYPE B4-R      TYPE B4-R1

59 sq m | 635 sq ft      69 sq m | 743 sq ft      70 sq m | 753 sq ft

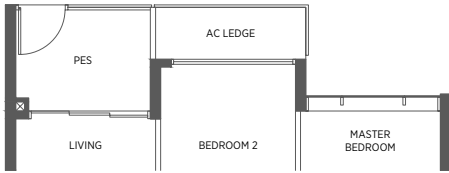
#02-24 to #17-24  
#02-25 to #17-25\*  
#02-58 to #17-58\*  
#18-25\*  
#18-58\*  
#18-24  
Incl. of 11 sq m | 118 sq ft of void area (high ceiling) above living & dining  
Incl. of 10 sq m | 108 sq ft of void area (high ceiling) above living & dining



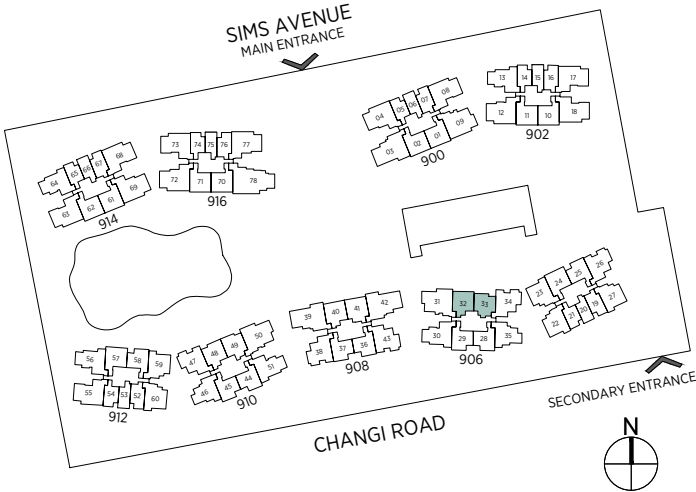
## TYPE B4-P

59 sq m | 635 sq ft

#01-24

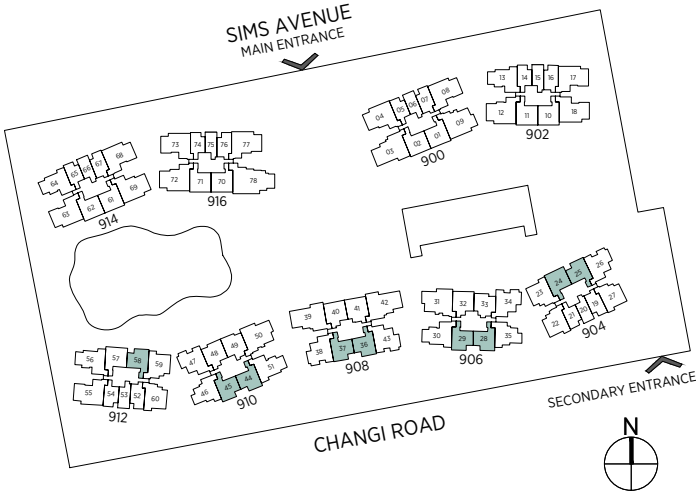


Area includes a/c ledge, balcony and void area (high ceiling). The plans are subject to change as may be required or approved by the relevant authorities. Areas are approximate measurements only and are subject to final survey. Plans are not drawn to scale and do not form part of the contract.



\* Denotes mirror image

Area includes a/c ledge, balcony and void area (high ceiling). The plans are subject to change as may be required or approved by the relevant authorities. Areas are approximate measurements only and are subject to final survey. Plans are not drawn to scale and do not form part of the contract.



## 2-Bedroom (Premium)

TYPE BP1

TYPE BP1-R

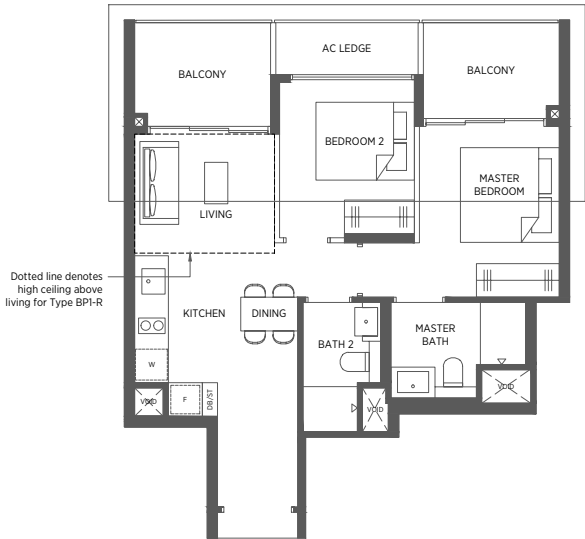
65 sq m | 700 sq ft

72 sq m | 775 sq ft

#02-40 to #17-40  
#02-41 to #17-41\*

#18-40  
#18-41\*

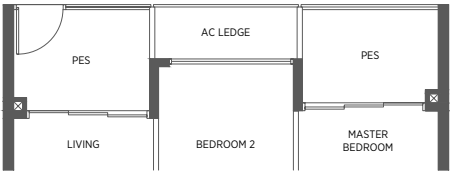
Incl. of 7 sq m | 75 sq ft of void area (high ceiling) above living



TYPE BP1-P

65 sq m | 700 sq ft

#01-40  
#01-41\*



TYPE BP2

TYPE BP2-R

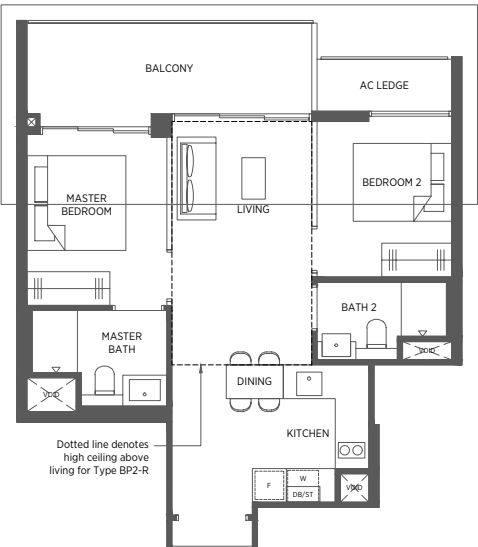
66 sq m | 710 sq ft

80 sq m | 861 sq ft

#02-49 to #17-49

#18-49

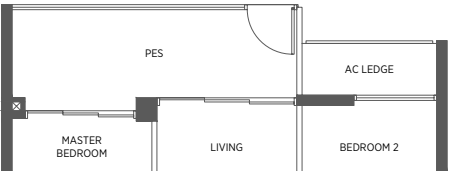
Incl. of 14 sq m | 151 sq ft of void area (high ceiling) above living



TYPE BP2-P

66 sq m | 710 sq ft

#01-49



## 2-Bedroom (Premium)

TYPE BP3

TYPE BP3-R

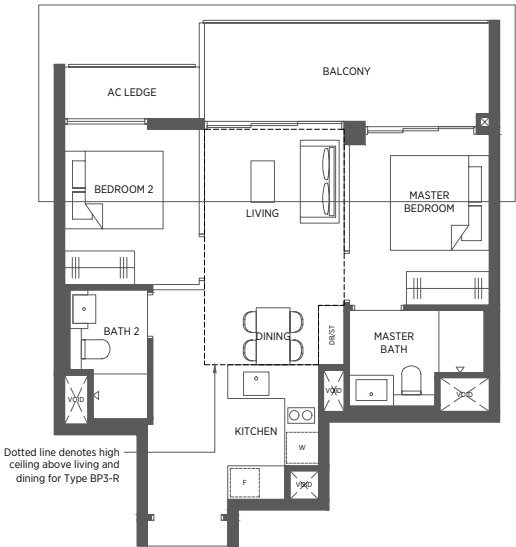
67 sq m | 721 sq ft

80 sq m | 861 sq ft

#02-48 to #17-48

#18-48

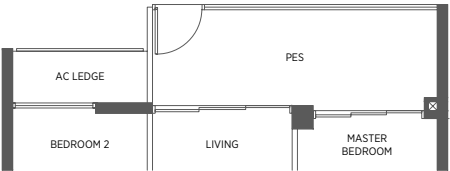
Incl. of 13 sq m | 140 sq ft of void area (high ceiling) above living & dining



TYPE BP3-P

67 sq m | 721 sq ft

#01-48



TYPE BP4

TYPE BP4-R

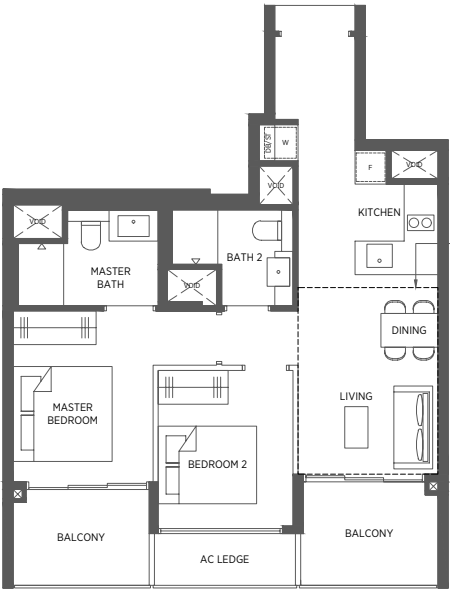
68 sq m | 732 sq ft

79 sq m | 850 sq ft

#02-70 to #17-70

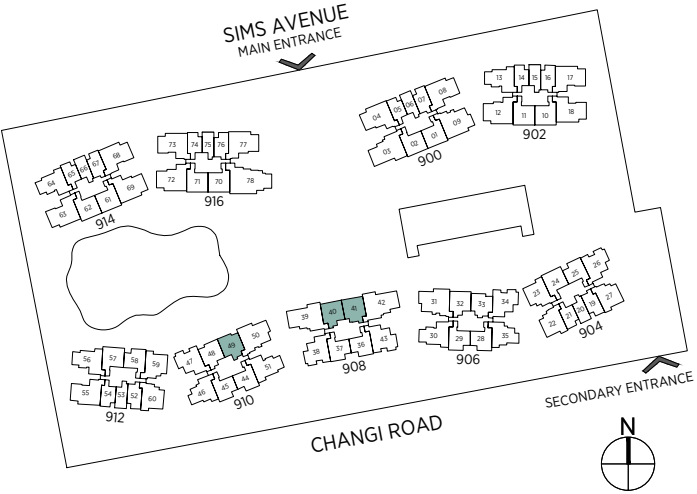
#18-70

Incl. of 11 sq m | 118 sq ft of void area (high ceiling) above living & dining

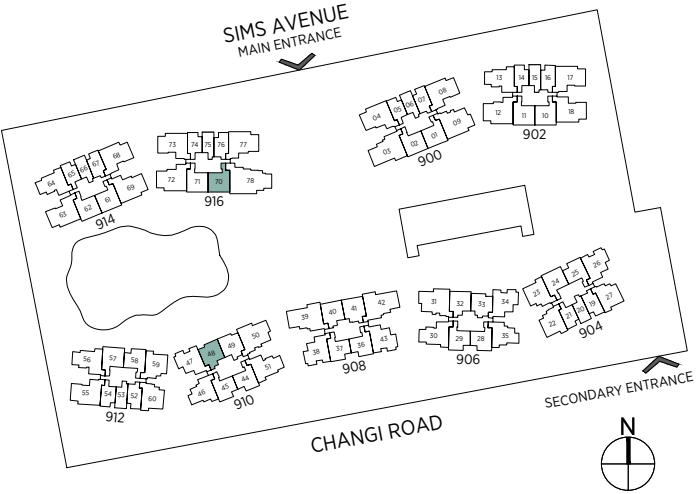


\* Denotes mirror image

Area includes a/c ledge, balcony and void area (high ceiling). The plans are subject to change as may be required or approved by the relevant authorities. Areas are approximate measurements only and are subject to final survey. Plans are not drawn to scale and do not form part of the contract.



Area includes a/c ledge, balcony and void area (high ceiling). The plans are subject to change as may be required or approved by the relevant authorities. Areas are approximate measurements only and are subject to final survey. Plans are not drawn to scale and do not form part of the contract.



## 2-Bedroom (Premium)

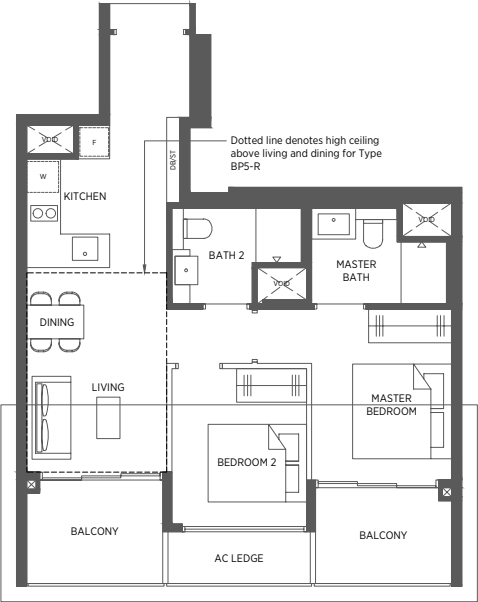
### TYPE BP5      TYPE BP5-R

69 sq m | 743 sq ft      80 sq m | 861 sq ft

#02-01 to #17-01\*  
#02-02 to #17-02  
#02-10 to #17-10\*  
#02-11 to #17-11  
#02-57 to #17-57\*  
#02-61 to #17-61\*  
#02-62 to #17-62  
#02-71 to #17-71

#18-01\*  
#18-02  
#18-10\*  
#18-11  
#18-57\*  
#18-61\*  
#18-62  
#18-71

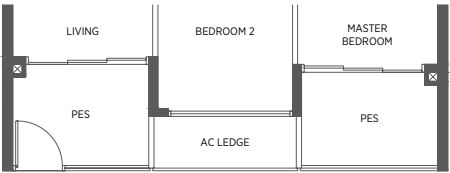
Incl. of 11 sq m | 118 sq ft  
of void area (high ceiling)  
above living & dining



### TYPE BP5-P

69 sq m | 743 sq ft

#01-02  
#01-11  
#01-57\*  
#01-62  
#01-71



## 2-Bedroom + Study

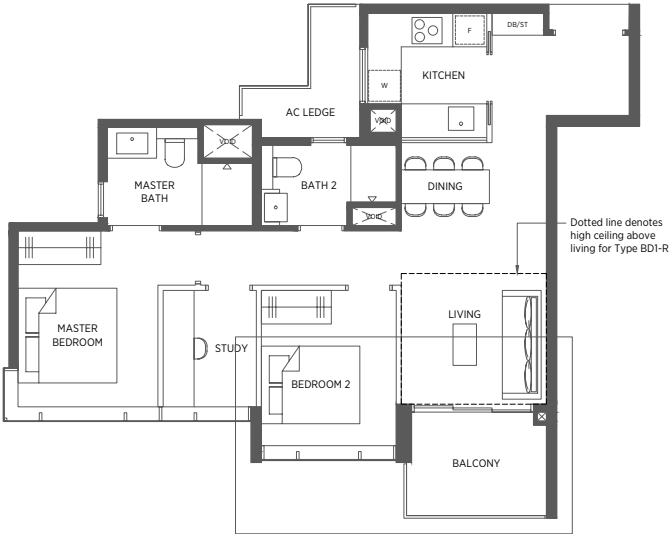
### TYPE BD1      TYPE BD1-R

77 sq m | 829 sq ft      85 sq m | 915 sq ft

#02-35 to #17-35\*  
#02-46 to #17-46

#18-35\*  
#18-46

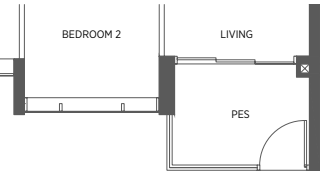
Incl. of 8 sq m | 86 sq ft  
of void area (high ceiling)  
above living



### TYPE BD1-P

77 sq m | 829 sq ft

#01-35\*  
#01-46



## 2-Bedroom + Study

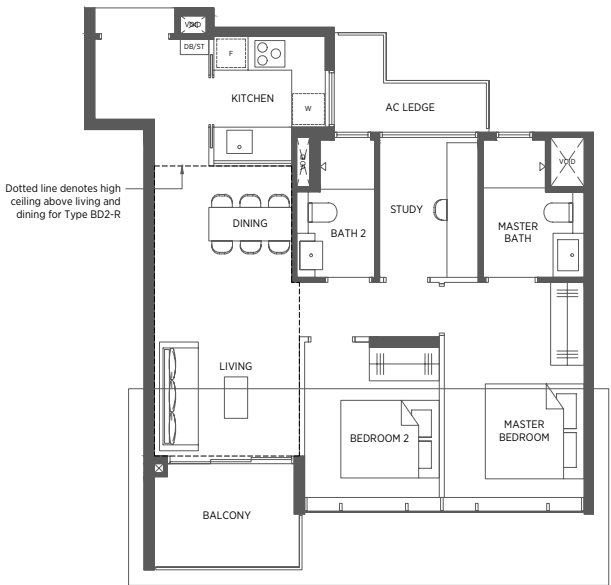
### TYPE BD2      TYPE BD2-R

78 sq m | 840 sq ft      95 sq m | 1023 sq ft

#02-22 to #17-22\*  
#03-27 to #17-27  
#02-60 to #17-60

#18-22\*  
#18-27  
#18-60

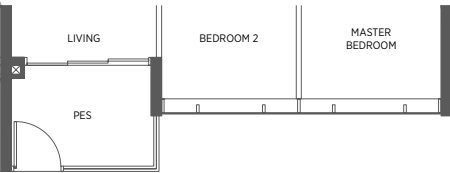
Incl. of 17 sq m | 183 sq ft  
of void area (high ceiling)  
above living & dining



### TYPE BD2-P

78 sq m | 840 sq ft

#01-22\*  
#01-60



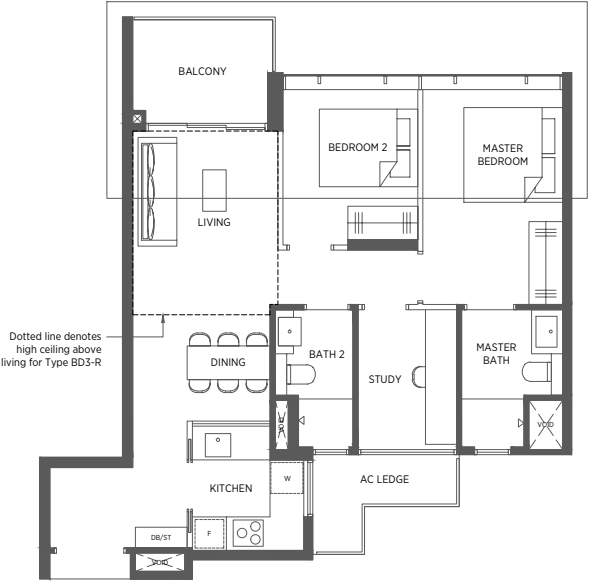
### TYPE BD3      TYPE BD3-R

78 sq m | 840 sq ft      89 sq m | 958 sq ft

#02-23 to #17-23\*  
#02-59 to #17-59

#18-23\*  
#18-59

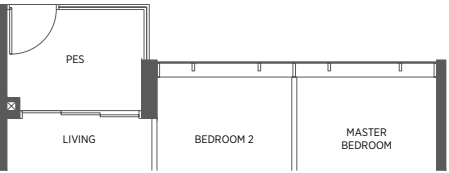
Incl. of 11 sq m | 118 sq ft  
of void area (high ceiling)  
above living



### TYPE BD3-P

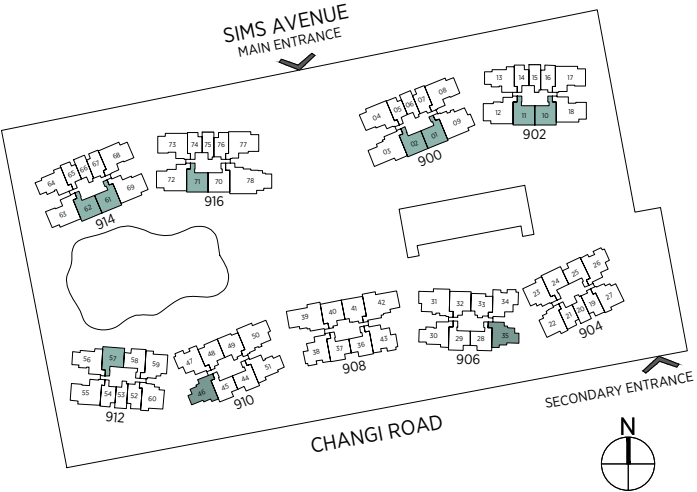
78 sq m | 840 sq ft

#01-23\*  
#01-59



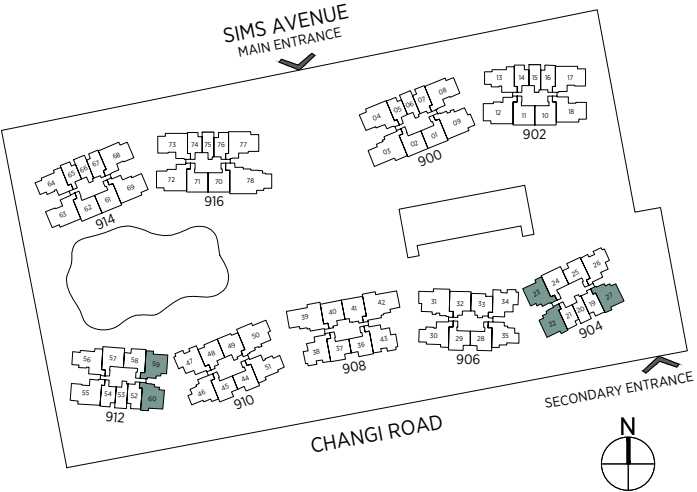
\* Denotes mirror image

Area includes a/c ledge, balcony and void area (high ceiling). The plans are subject to change as may be required or approved by the relevant authorities. Areas are approximate measurements only and are subject to final survey. Plans are not drawn to scale and do not form part of the contract.



\* Denotes mirror image

Area includes a/c ledge, balcony and void area (high ceiling). The plans are subject to change as may be required or approved by the relevant authorities. Areas are approximate measurements only and are subject to final survey. Plans are not drawn to scale and do not form part of the contract.





# 3-Bedroom

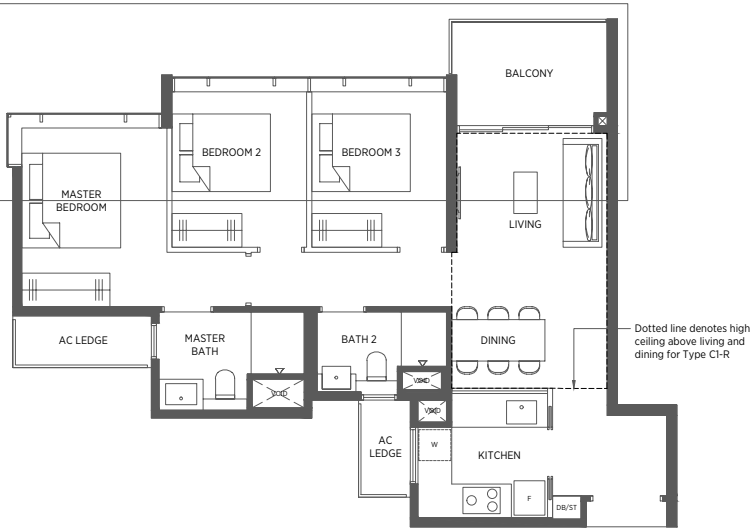
TYPE C1  
84 sq m | 904 sq ft

TYPE C1-R  
100 sq m | 1076 sq ft

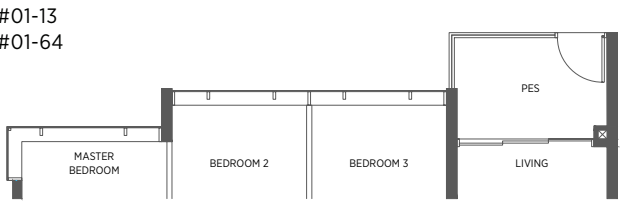
#02-13 to #17-13  
#02-64 to #17-64

#18-13  
#18-64

Incl. of 16 sq m | 172 sq ft  
of void area (high ceiling)  
above living & dining



TYPE C1-P  
84 sq m | 904 sq ft



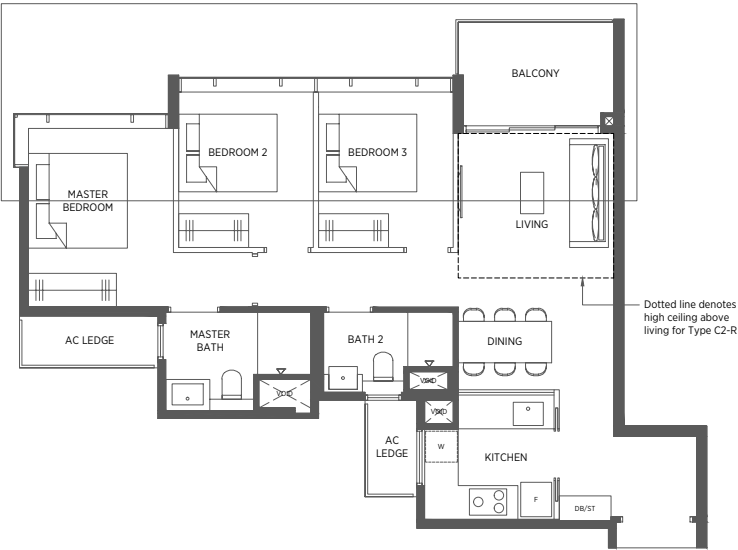
TYPE C2  
85 sq m | 915 sq ft

TYPE C2-R  
94 sq m | 1012 sq ft

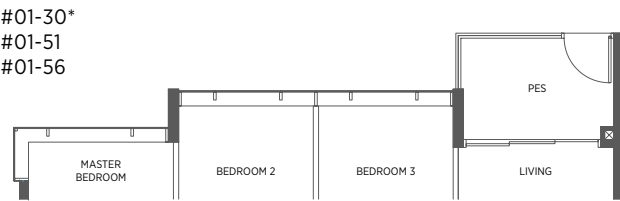
#02-30 to #17-30\*  
#02-51 to #17-51  
#02-56 to #17-56

#18-30\*  
#18-51  
#18-56

Incl. of 9 sq m | 97 sq ft  
of void area (high ceiling)  
above living



TYPE C2-P  
85 sq m | 915 sq ft



# 3-Bedroom

TYPE C3  
86 sq m | 926 sq ft

TYPE C3-R  
98 sq m | 1055 sq ft

TYPE C3-R1  
103 sq m | 1109 sq ft

#03-26 to #17-26\*  
#02-34 to #17-34\*  
#02-38 to #17-38\*  
#02-43 to #17-43  
#02-47 to #17-47

#18-26\*  
#18-38\*  
#18-43

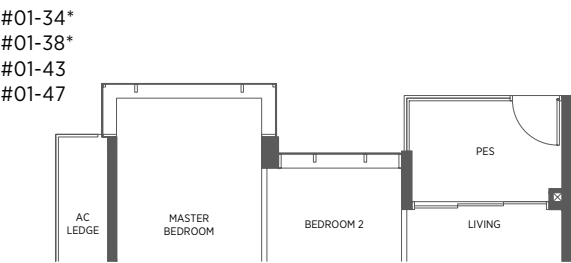
#18-34\*  
#18-47

Incl. of 12 sq m | 129 sq ft  
of void area (high ceiling)  
above living

Incl. of 17 sq m | 183 sq ft  
of void area (high ceiling)  
above living & dining



TYPE C3-P  
86 sq m | 926 sq ft



# 3-Bedroom + Study

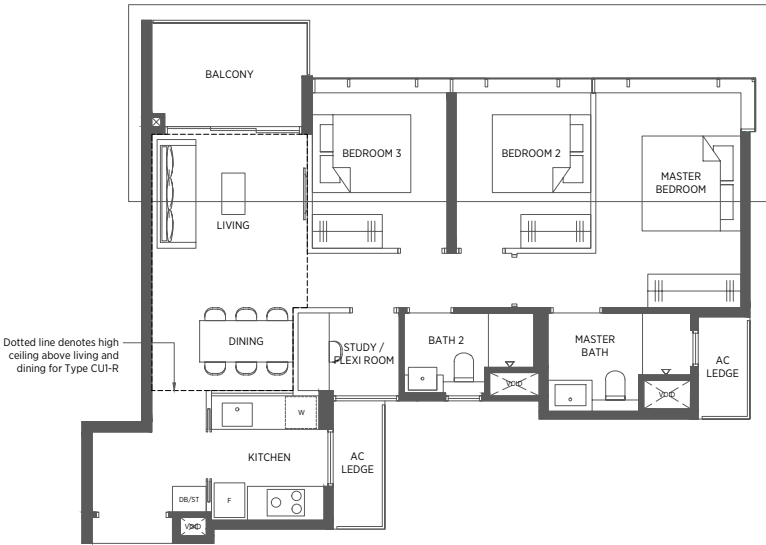
TYPE CU1  
89 sq m | 958 sq ft

TYPE CU1-R  
104 sq m | 1119 sq ft

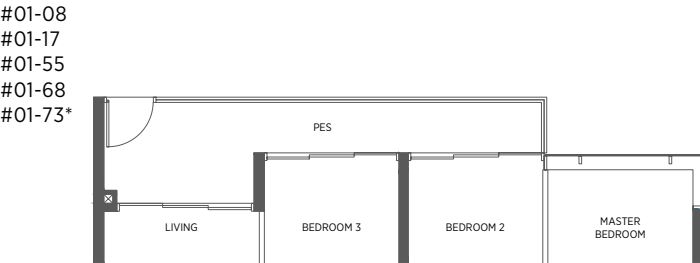
#02-08 to #17-08  
#02-17 to #17-17  
#02-55 to #17-55  
#02-68 to #17-68  
#02-73 to #17-73\*

#18-08  
#18-17  
#18-55  
#18-68  
#18-73\*

Incl. of 15 sq m | 161 sq ft  
of void area (high ceiling)  
above living & dining

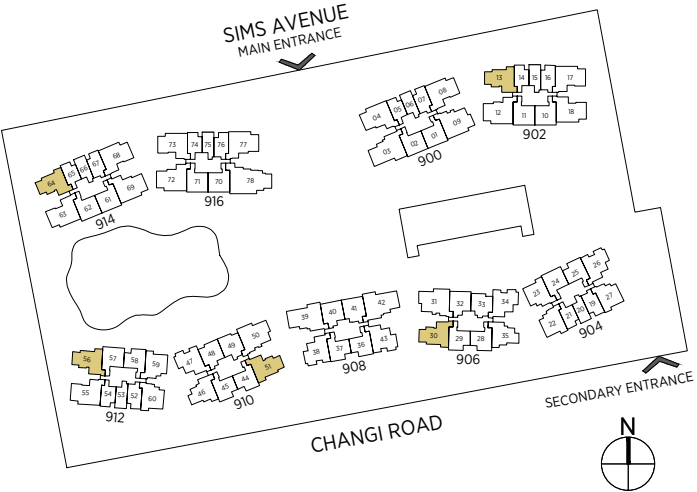


TYPE CU1-P  
95 sq m | 1023 sq ft



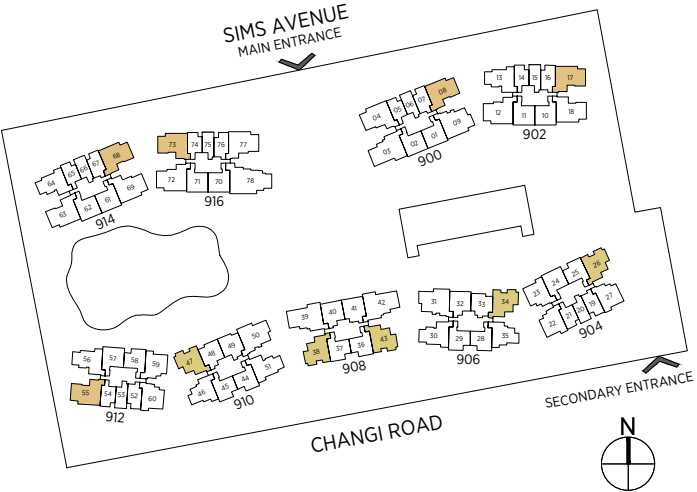
\* Denotes mirror image

Area includes a/c ledge, balcony and void area (high ceiling). The plans are subject to change as may be required or approved by the relevant authorities. Areas are approximate measurements only and are subject to final survey. Plans are not drawn to scale and do not form part of the contract.



\* Denotes mirror image

Area includes a/c ledge, balcony and void area (high ceiling). The plans are subject to change as may be required or approved by the relevant authorities. Areas are approximate measurements only and are subject to final survey. Plans are not drawn to scale and do not form part of the contract.



# 3-Bedroom + Study

## TYPE CU2      TYPE CU2-R

93 sq m | 1001 sq ft      102 sq m | 1098 sq ft

#02-18 to #17-18\*  
#02-63 to #17-63

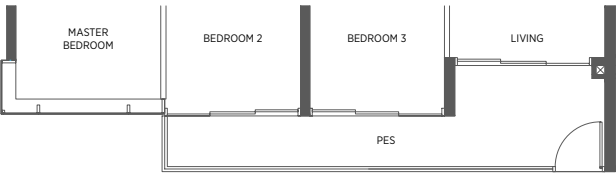
Incl. of 9 sq m | 97 sq ft  
of void area (high ceiling)  
above living



## TYPE CU2-P

96 sq m | 1033 sq ft

#01-18\*  
#01-63



\* Denotes mirror image

Area includes a/c ledge, balcony and void area (high ceiling). The plans are subject to change as may be required or approved by the relevant authorities. Areas are approximate measurements only and are subject to final survey. Plans are not drawn to scale and do not form part of the contract.

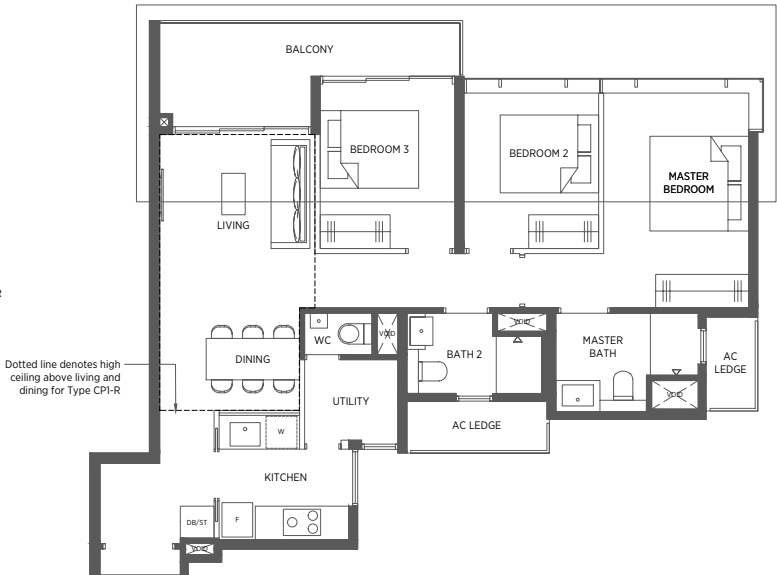
# 3-Bedroom (Premium)

## TYPE CP1      TYPE CP1-R

95 sq m | 1023 sq ft      112 sq m | 1206 sq ft

#02-04 to #17-04\*  
#02-77 to #17-77

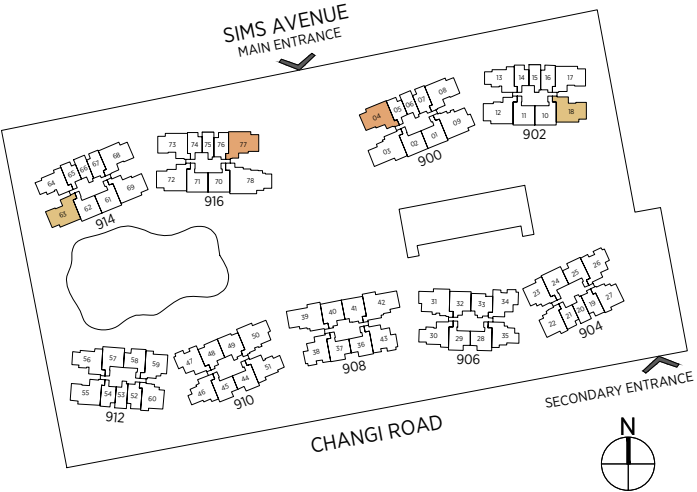
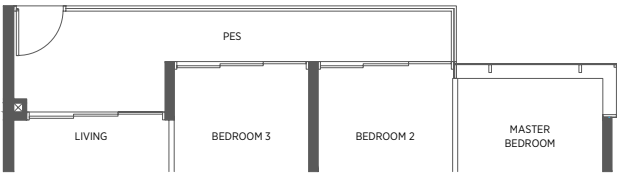
Incl. of 17 sq m | 183 sq ft  
of void area (high ceiling)  
above living & dining



## TYPE CP1-P

98 sq m | 1055 sq ft

#01-04\*  
#01-77



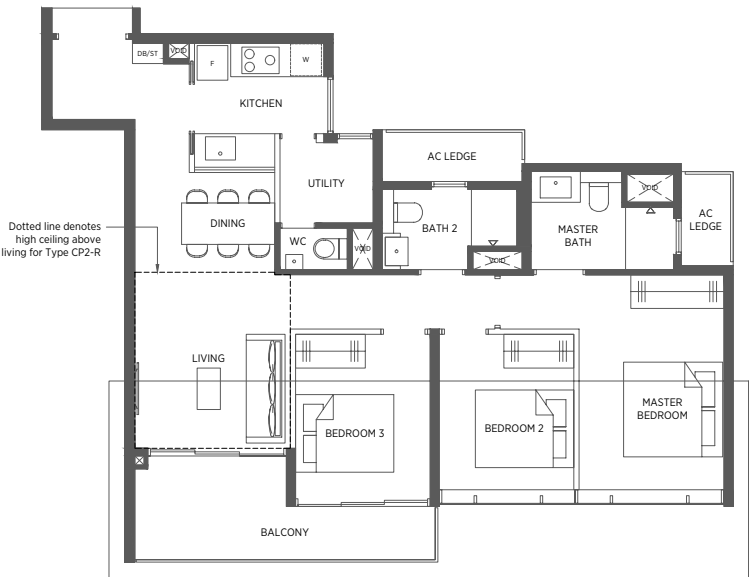
# 3-Bedroom (Premium)

## TYPE CP2      TYPE CP2-R

96 sq m | 1033 sq ft      107 sq m | 1152 sq ft

#02-12 to #17-12\*  
#02-69 to #17-69  
#02-72 to #17-72\*

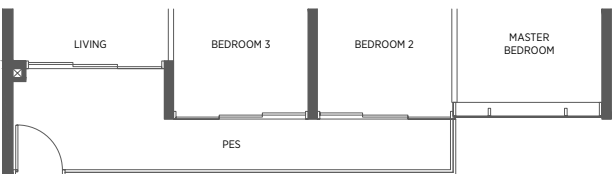
Incl. of 11 sq m | 118 sq ft  
of void area (high ceiling)  
above living



## TYPE CP2-P

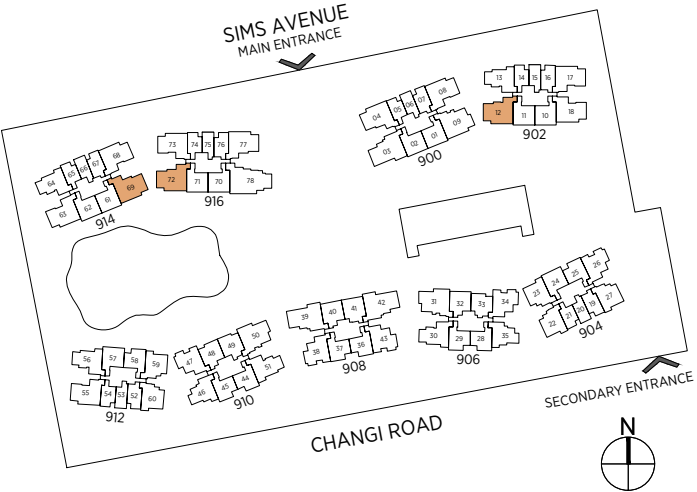
99 sq m | 1066 sq ft

#01-12\*  
#01-69  
#01-72\*



\* Denotes mirror image

Area includes a/c ledge, balcony and void area (high ceiling). The plans are subject to change as may be required or approved by the relevant authorities. Areas are approximate measurements only and are subject to final survey. Plans are not drawn to scale and do not form part of the contract.



# 4-Bedroom

TYPE D1      TYPE D1-R

104 sq m | 1119 sq ft      124 sq m | 1335 sq ft

#02-31 to #17-31      #18-31  
#02-50 to #17-50\*      #18-50\*

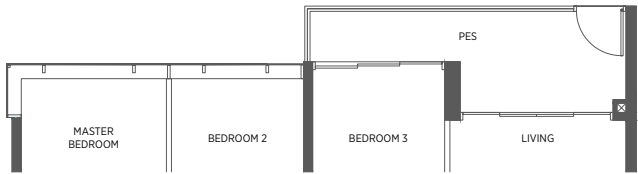
Incl. of 20 sq m | 215 sq ft  
of void area (high ceiling)  
above living & dining



TYPE D1-P

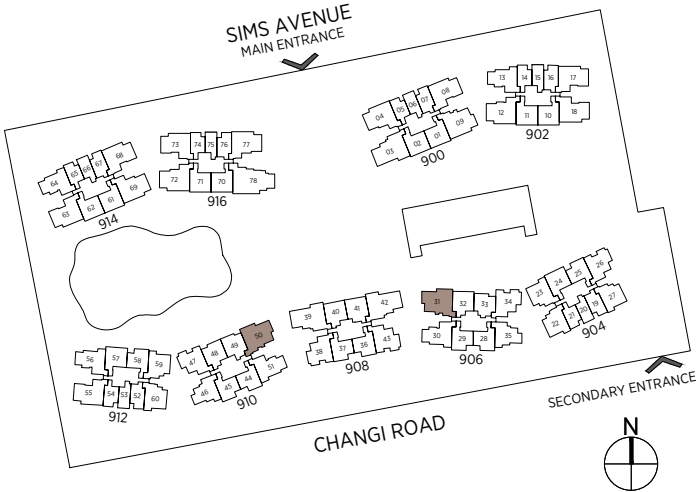
104 sq m | 1119 sq ft

#01-31  
#01-50\*



\* Denotes mirror image

Area includes a/c ledge, balcony and void area (high ceiling). The plans are subject to change as may be required or approved by the relevant authorities. Areas are approximate measurements only and are subject to final survey. Plans are not drawn to scale and do not form part of the contract.



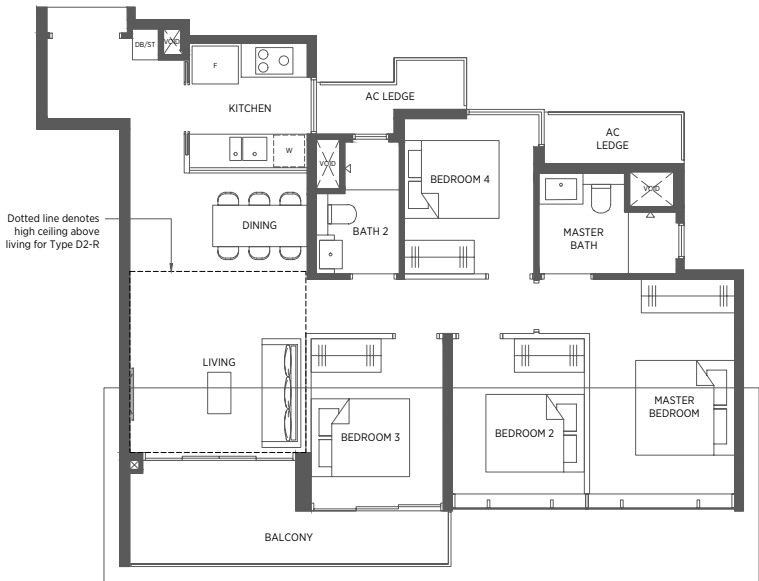
# 4-Bedroom

TYPE D2      TYPE D2-R

104 sq m | 1119 sq ft      117 sq m | 1259 sq ft

#02-09 to #17-09      #18-09

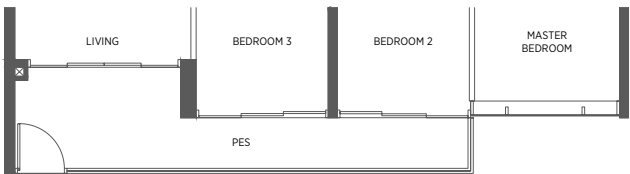
Incl. of 13 sq m | 140 sq ft  
of void area (high ceiling)  
above living



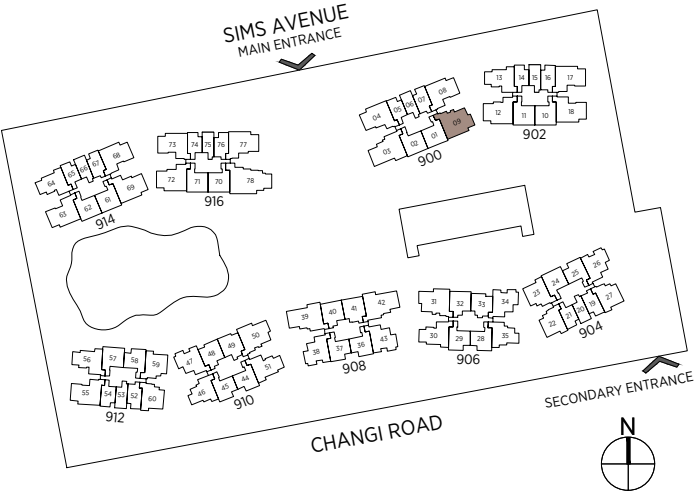
TYPE D2-P

107 sq m | 1152 sq ft

#01-09



Area includes a/c ledge, balcony and void area (high ceiling). The plans are subject to change as may be required or approved by the relevant authorities. Areas are approximate measurements only and are subject to final survey. Plans are not drawn to scale and do not form part of the contract.



# 4-Bedroom (Premium)

TYPE DP

TYPE DP-R

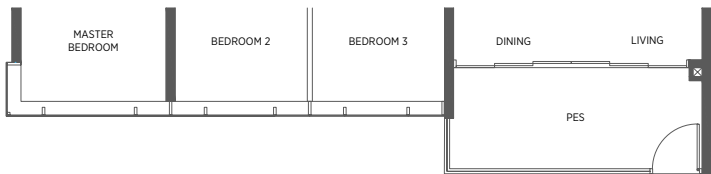
114 sq m | 1227 sq ft

131 sq m | 1410 sq ft

#02-03 to #17-03  
#02-39 to #17-39\*  
#02-42 to #17-42

#18-03  
#18-39\*  
#18-42

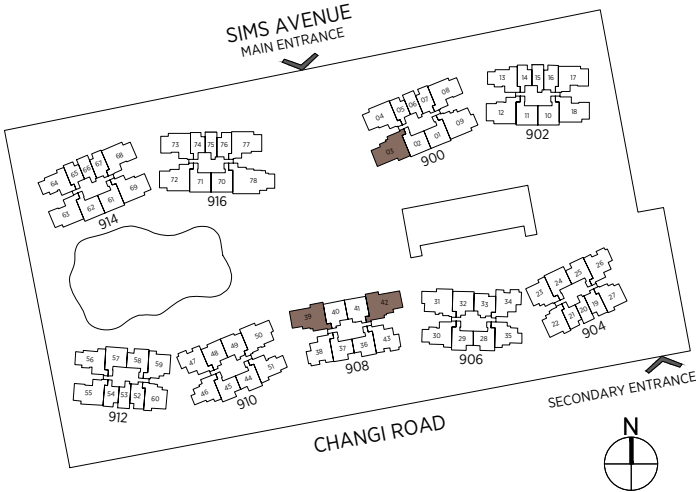
Incl. of 17 sq m | 183 sq ft  
of void area (high ceiling)  
above living & dining



TYPE DP-P

114 sq m | 1227 sq ft

#01-03  
#01-39\*  
#01-42



\* Denotes mirror image

Area includes a/c ledge, balcony and void area (high ceiling). The plans are subject to change as may be required or approved by the relevant authorities. Areas are approximate measurements only and are subject to final survey. Plans are not drawn to scale and do not form part of the contract.

# 5-Bedroom

TYPE E

TYPE E-R

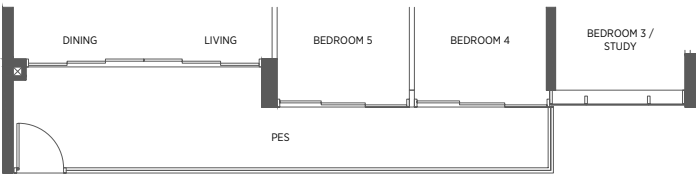
130 sq m | 1399 sq ft

149 sq m | 1604 sq ft

#02-78 to #17-78

#18-78

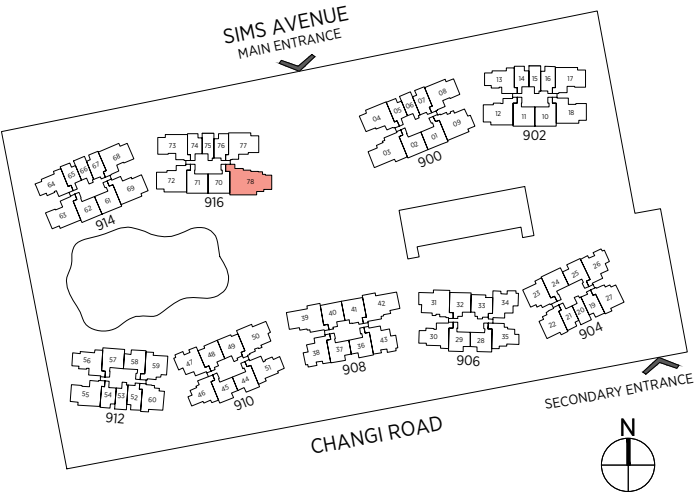
Incl. of 19 sq m | 205 sq ft  
of void area (high ceiling)  
above living & dining



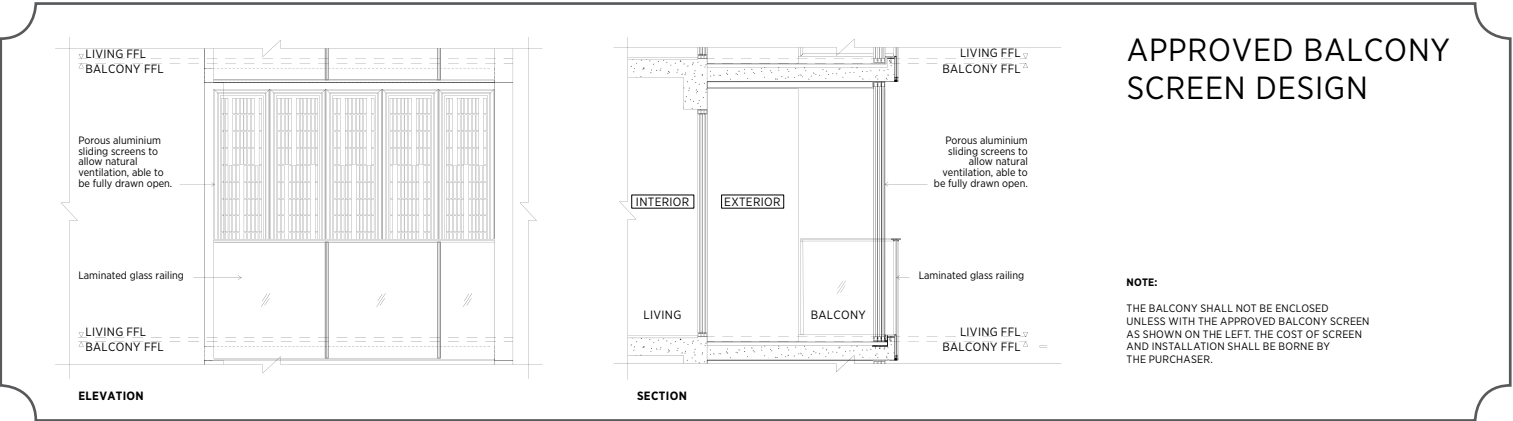
TYPE E-P

137 sq m | 1475 sq ft

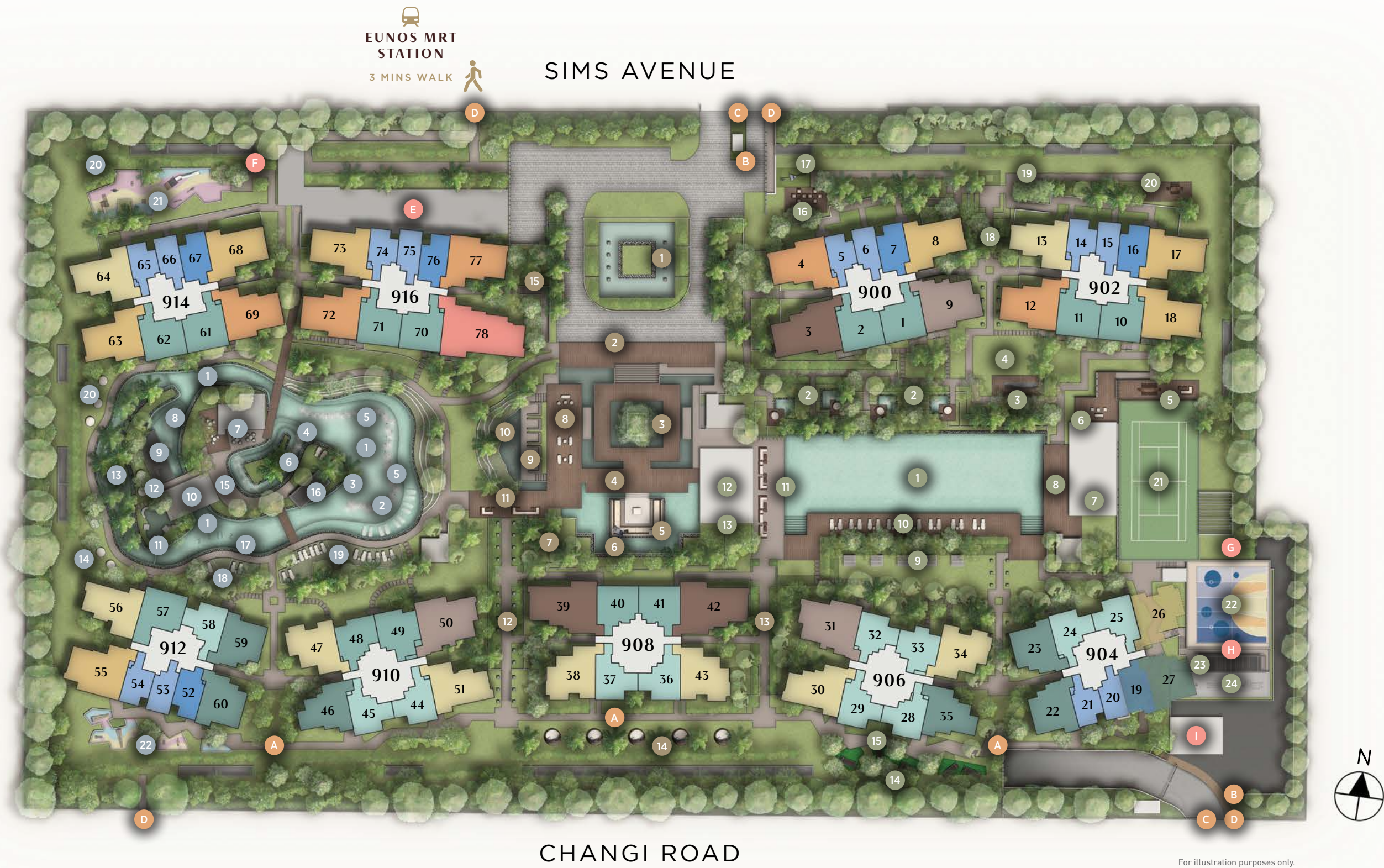
#01-78



Area includes a/c ledge, balcony and void area (high ceiling). The plans are subject to change as may be required or approved by the relevant authorities. Areas are approximate measurements only and are subject to final survey. Plans are not drawn to scale and do not form part of the contract.







## SITE PLAN

### WEST PARC

- Family Lagoon
- Water Beds
- Body Massage Jets
- Foot Massage Jets
- Bubble Jets
- Kids' Water Jets
- Grill & Dine Island
- Kids' Water Playground
- Island Party Pavilion
- Kids' Party Pavilion
- Junior Glamping Lawn
- Beanbag Lounge
- Palm Pool
- Cosy Lounge
- Lagoon Deck

### GRAND PARC

- Lantern Isle
- Signature Arrival Court
- Majestic Tree Atrium
- Atrium Deck
- Sunken Party Lounge
- Reflective Pond
- Grill & Dine Island
- Outdoor Multi Gym

### EAST PARC

- 50m Lap Pool
- Jacuzzi Pools
- Foot Reflexology Pavilion
- Lawn
- Wi-Fi Pavilion
- Parc Clubhouse
- Poolside Dining Verandah
- Pool Deck
- Luxe Cabanas
- Koi Pond
- Garden Lounge
- Lantern Promenade
- Firefly Promenade
- Cabana Park
- Bicycle Lift

### OTHERS

- A Jogging Trail
- B Guard Post
- C Vehicular Ingress & Egress
- D Pedestrian Side Gate

### BASEMENT

- E Shoppes @ Parc Esta
- F Management Office
- G Transformer Room
- H Substation
- I Bin Centre

## SCHEMATIC DIAGRAM

- TYPE A1/A2  
1-Bedroom
- TYPE AD1/AD2/AD3-P/AD4-P  
1-Bedroom + Study
- TYPE B1/B2/B3/B4  
2-Bedroom
- TYPE BP1/BP2/BP3/BP4/BP5  
2-Bedroom Premium
- TYPE BD1/BD2/BD3  
2-Bedroom + Study
- TYPE C1/C2/C3  
3-Bedroom
- TYPE CU1/CU2  
3-Bedroom + Study
- TYPE CP1/CP2  
3-Bedroom Premium
- TYPE D1/D2  
4-Bedroom
- TYPE DP  
4-Bedroom Premium
- TYPE E  
5-Bedroom

BLOCK 914 SIMS AVENUE (S)408973

	61	62	63	64	65	66	67	68	69
18	BP5-R 18-61	BP5-R 18-62	CU2-R 18-63	C1-R 18-64	A2-R 18-65	A1-R 18-66	AD1-R 18-67	CU1-R 18-68	CP2-R 18-69
17	BP5 17-61	BP5 17-62	CU2 17-63	C1 17-64	A2 17-65	A1 17-66	AD1 17-67	CU1 17-68	CP2 17-69
16	BP5 16-61	BP5 16-62	CU2 16-63	C1 16-64	A2 16-65	A1 16-66	AD1 16-67	CU1 16-68	CP2 16-69
15	BP5 15-61	BP5 15-62	CU2 15-63	C1 15-64	A2 15-65	A1 15-66	AD1 15-67	CU1 15-68	CP2 15-69
14	BP5 14-61	BP5 14-62	CU2 14-63	C1 14-64	A2 14-65	A1 14-66	AD1 14-67	CU1 14-68	CP2 14-69
13	BP5 13-61	BP5 13-62	CU2 13-63	C1 13-64	A2 13-65	A1 13-66	AD1 13-67	CU1 13-68	CP2 13-69
12	BP5 12-61	BP5 12-62	CU2 12-63	C1 12-64	A2 12-65	A1 12-66	AD1 12-67	CU1 12-68	CP2 12-69
11	BP5 11-61	BP5 11-62	CU2 11-63	C1 11-64	A2 11-65	A1 11-66	AD1 11-67	CU1 11-68	CP2 11-69
10	BP5 10-61	BP5 10-62	CU2 10-63	C1 10-64	A2 10-65	A1 10-66	AD1 10-67	CU1 10-68	CP2 10-69
9	BP5 09-61	BP5 09-62	CU2 09-63	C1 09-64	A2 09-65	A1 09-66	AD1 09-67	CU1 09-68	CP2 09-69
8	BP5 08-61	BP5 08-62	CU2 08-63	C1 08-64	A2 08-65	A1 08-66	AD1 08-67	CU1 08-68	CP2 08-69
7	BP5 07-61	BP5 07-62	CU2 07-63	C1 07-64	A2 07-65	A1 07-66	AD1 07-67	CU1 07-68	CP2 07-69
6	BP5 06-61	BP5 06-62	CU2 06-63	C1 06-64	A2 06-65	A1 06-66	AD1 06-67	CU1 06-68	CP2 06-69
5	BP5 05-61	BP5 05-62	CU2 05-63	C1 05-64	A2 05-65	A1 05-66	AD1 05-67	CU1 05-68	CP2 05-69
4	BP5 04-61	BP5 04-62	CU2 04-63	C1 04-64	A2 04-65	A1 04-66	AD1 04-67	CU1 04-68	CP2 04-69
3	BP5 03-61	BP5 03-62	CU2 03-63	C1 03-64	A2 03-65	A1 03-66	AD1 03-67	CU1 03-68	CP2 03-69
2	BP5 02-61	BP5 02-62	CU2 02-63	C1 02-64	A2 02-65	A1 02-66	AD1 02-67	CU1 02-68	CP2 02-69
1	AD3-P 01-61	BP5-P 01-62	CU2-P 01-63	C1-P 01-64	A2-P 01-65	A1-P 01-66	AD1-P 01-67	CU1-P 01-68	CP2-P 01-69

BLOCK 916 SIMS AVENUE (S)408974

	70	71	72	73	74	75	76	77	78
18	BP4-R 18-70	BP5-R 18-71	CP2-R 18-72	CU1-R 18-73	A2-R 18-74	A1-R 18-75	AD1-R 18-76	CU1-R 18-77	E-R 18-78
17	BP4 17-70	BP5 17-71	CP2 17-72	CU1 17-73	A2 17-74	A1 17-75	AD1 17-76	CU1 17-77	E 17-78
16	BP4 16-70	BP5 16-71	CP2 16-72	CU1 16-73	A2 16-74	A1 16-75	AD1 16-76	CU1 16-77	E 16-78
15	BP4 15-70	BP5 15-71	CP2 15-72	CU1 15-73	A2 15-74	A1 15-75	AD1 15-76	CU1 15-77	E 15-78
14	BP4 14-70	BP5 14-71	CP2 14-72	CU1 14-73	A2 14-74	A1 14-75	AD1 14-76	CU1 14-77	E 14-78
13	BP4 13-70	BP5 13-71	CP2 13-72	CU1 13-73	A2 13-74	A1 13-75	AD1 13-76	CU1 13-77	E 13-78
12	BP4 12-70	BP5 12-71	CP2 12-72	CU1 12-73	A2 12-74	A1 12-75	AD1 12-76	CU1 12-77	E 12-78
11	BP4 11-70	BP5 11-71	CP2 11-72	CU1 11-73	A2 11-74	A1 11-75	AD1 11-76	CU1 11-77	E 11-78
10	BP4 10-70	BP5 10-71	CP2 10-72	CU1 10-73	A2 10-74	A1 10-75	AD1 10-76	CU1 10-77	E 10-78
9	BP4 09-70	BP5 09-71	CP2 09-72	CU1 09-73	A2 09-74	A1 09-75	AD1 09-76	CU1 09-77	E 09-78
8	BP4 08-70	BP5 08-71	CP2 08-72	CU1 08-73	A2 08-74	A1 08-75	AD1 08-76	CU1 08-77	E 08-78
7	BP4 07-70	BP5 07-71	CP2 07-72	CU1 07-73	A2 07-74	A1 07-75	AD1 07-76	CU1 07-77	E 07-78
6	BP4 06-70	BP5 06-71	CP2 06-72	CU1 06-73	A2 06-74	A1 06-75	AD1 06-76	CU1 06-77	E 06-78
5	BP4 05-70	BP5 05-71	CP2 05-72	CU1 05-73	A2 05-74	A1 05-75	AD1 05-76	CU1 05-77	E 05-78
4	BP4 04-70	BP5 04-71	CP2 04-72	CU1 04-73	A2 04-74	A1 04-75	AD1 04-76	CU1 04-77	E 04-78
3	BP4 03-70	BP5 03-71	CP2 03-72	CU1 03-73	A2 03-74	A1 03-75	AD1 03-76	CU1 03-77	E 03-78
2	BP4 02-70	BP5 02-71	CP2 02-72	CU1 02-73	A2 02-74	A1 02-75	AD1 02-76	CU1 02-77	E 02-78
1	AD4-P 01-70	BP5-P 01-71	CP2-P 01-72	CU1-P 01-73	A2-P 01-74	A1-P 01-75	AD1-P 01-76	CU1-P 01-77	E-P 01-78

BLOCK 912 SIMS AVENUE (S)408972

	52	53	54	55	56	57	58	59	60
18	AD1-R 18-52	A1-R 18-53	A2-R 18-54	CU1-R 18-55	C2-R 18-56	BP5-R 18-57	B4-R 18-58	BD3-R 18-59	BD2-R 18-60
17	AD1 17-52	A1 17-53	A2 17-54	CU1 17-55	C2 17-56	BP5 17-57	B4 17-58	BD3 17-59	BD2 17-60
16	AD1 16-52	A1 16-53	A2 16-54	CU1 16-55	C2 16-56	BP5 16-57	B4 16-58	BD3 16-59	BD2 16-60
15	AD1 15-52	A1 15-53	A2 15-54	CU1 15-55	C2 15-56	BP5 15-57	B4 15-58	BD3 15-59	BD2 15-60
14	AD1 14-52	A1 14-53	A2 14-54	CU1 14-55	C2 14-56	BP5 14-57	B4 14-58	BD3 14-59	BD2 14-60
13	AD1 13-52	A1 13-53	A2 13-54	CU1 13-55	C2 13-56	BP5 13-57	B4 13-58	BD3 13-59	BD2 13-60
12	AD1 12-52	A1 12-53	A2 12-54	CU1 12-55	C2 12-56	BP5 12-57	B4 12-58	BD3 12-59	BD2 12-60
11	AD1 11-52	A1 11-53	A2 11-54	CU1 11-55	C2 11-56	BP5 11-57	B4 11-58	BD3 11-59	BD2 11-60
10	AD1 10-52	A1 10-53	A2 10-54	CU1 10-55	C2 10-56	BP5 10-57	B4 10-58	BD3 10-59	BD2 10-60
9	AD1 09-52	A1 09-53	A2 09-54	CU1 09-55	C2 09-56	BP5 09-57	B4 09-58	BD3 09-59	BD2 09-60
8	AD1 08-52	A1 08-53	A2 08-54	CU1 08-55	C2 08-56	BP5 08-57	B4 08-58	BD3 08-59	BD2 08-60
7	AD1 07-52	A1 07-53	A2 07-54	CU1 07-55	C2 07-56	BP5 07-57	B4 07-58	BD3 07-59	BD2 07-60
6	AD1 06-52	A1 06-53	A2 06-54	CU1 06-55	C2 06-56	BP5 06-57	B4 06-58	BD3 06-59	BD2 06-60
5	AD1 05-52	A1 05-53	A2 05-54	CU1 05-55	C2 05-56	BP5 05-57	B4 05-58	BD3 05-59	BD2 05-60
4	AD1 04-52	A1 04-53	A2 04-54	CU1 04-55	C2 04-56	BP5 04-57	B4 04-58	BD3 04-59	BD2 04-60
3	AD1 03-52	A1 03-53	A2 03-54	CU1 03-55	C2 03-56	BP5 03-57	B4 03-58	BD3 03-59	BD2 03-60
2	AD1 02-52	A1 02-53	A2 02-54	CU1 02-55	C2 02-56	BP5 02-57	B4 02-58	BD3 02-59	BD2 02-60
1	AD3-P 01-52	A1-P 01-53	A2-P 01-54	CU1-P 01-55	C2-P 01-56	BP5-P 01-57	AD3-P 01-58	BD3-P 01-59	BD2-P 01-60

BLOCK 910 SIMS AVENUE (S)408971

	44	45	46	47	48	49	50	51
18	B3-R 18-44	B3-R 18-45	BD1-R 18-46	C3-R 18-47	BP3-R 18-48	BP2-R 18-49	BD1-R 18-50	C2-R 18-51
17	B3 17-44	B3 17-45	BD1 17-46	C3 17-47	BP3 17-48	BP2 17-49	BD1 17-50	C2 17-51
16	B3 16-44	B3 16-45	BD1 16-46	C3 16-47	BP3 16-48	BP2 16-49	BD1 16-50	C2 16-51
15	B3 15-44	B3 15-45	BD1 15-46	C3 15-47	BP3 15-48	BP2 15-49	BD1 15-50	C2 15-51
14	B3 14-44	B3 14-45	BD1 14-46	C3 14-47	BP3 14-48	BP2 14-49	BD1 14-50	C2 14-51
13	B3 13-44	B3 13-45	BD1 13-46	C3 13-47	BP3 13-48	BP2 13-49	BD1 13-50	C2 13-51
12	B3 12-44	B3 12-45	BD1 12-46	C3 12-47	BP3 12-48	BP2 12-49	BD1 12-50	C2 12-51
11	B3 11-44	B3 11-45	BD1 11-46	C3 11-47	BP3 11-48	BP2 11-49	BD1 11-50	C2 11-51
10	B3 10-44	B3 10-45	BD1 10-46	C3 10-47	BP3 10-48	BP2 10-49	BD1 10-50	C2 10-51
9	B3 09-44	B3 09-45	BD1 09-46	C3 09-47	BP3 09-48	BP2 09-49	BD1 09-50	C2 09-51
8	B3 08-44	B3 08-45	BD1 08-46	C3 08-47	BP3 08-48	BP2 08-49	BD1 08-50	C2 08-51
7	B3 07-44	B3 07-45	BD1 07-46	C3 07-47	BP3 07-48	BP2 07-49	BD1 07-50	C2 07-51
6	B3 06-44	B3 06-45	BD1 06-46	C3 06-47	BP3 06-48	BP2 06-49	BD1 06-50	C2 06-51
5	B3 05-44	B3 05-45	BD1 05-46	C3 05-47	BP3 05-48	BP2 05-49	BD1 05-50	C2 05-51
4	B3 04-44	B3 04-45	BD1 04-46	C3 04-47	BP3 04-48	BP2 04-49	BD1 04-50	C2 04-51
3	B3 03-44	B3 03-45	BD1 03-46	C3 03-47	BP3 03-48	BP2 03-49	BD1 03-50	C2 03-51
2	B3 02-44	B3 02-45	BD1 02-46	C3 02-47	BP3 02-48	BP2 02-49	BD1 02-50	C2 02-51
1	AD3-P 01-44	B3-P 01-45	BD1-P 01-46	C3-P 01-47	BP3-P 01-48	BP2-P 01-49	D1-P 01-50	C2-P 01-51

BLOCK 908 SIMS AVENUE (S)408970

	36	37	38	39	40	41	42	43
18	B3-R 18-36	B3-R 18-37	C3-R 18-38	DP-R 18-39	BP1-R 18-40	BP1-R 18-41	DP-R 18-42	C2-R 18-43
17	B3 17-36	B3 17-37	C3 17-38	DP 17-39	BP1 17-40	BP1 17-41	DP 17-42	C2 17-43
16	B3 16-36	B3 16-37	C3 16-38	DP 16-39	BP1 16-40	BP1 16-41	DP 16-42	C2 16-43
15	B3 15-36	B3 15-37	C3 15-38	DP 15-39	BP1 15-40	BP1 15-41	DP 15-42	C2 15-43
14	B3 14-36	B3 14-37	C3 14-38	DP 14-39	BP1 14-40	BP1 14-41	DP 14-42	C2 14-43
13	B3 13-36	B3 13-37	C3 13-38	DP 13-39	BP1 13-40	BP1 13-41	DP 13-42	C2 13-43
12	B3 12-36	B3 12-37	C3 12-38	DP 12-39	BP1 12-40	BP1 12-41	DP 12-42	C2 12-43
11	B3 11-36	B3 11-37	C3 11-38	DP 11-39	BP1 11-40	BP1 11-41	DP 11-42	C2 11-43
10	B3 10-36	B3 10-37	C3 10-38	DP 10-39	BP1 10-40	BP1 10-41	DP 10-42	C